

A1 Custom Made 1/4 Zipper Jumper

Rugula Fit



PRODUCT MEASUREMENTS

Kid and Junior size K2-K16

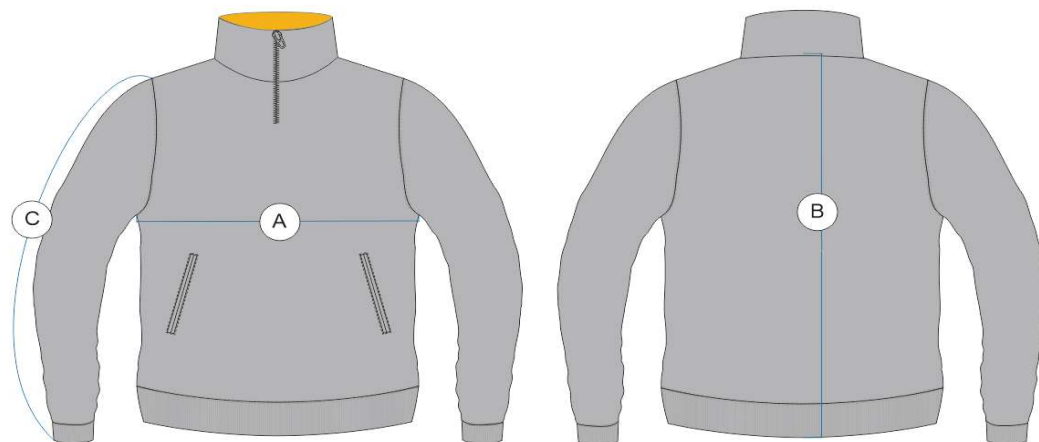
Size	K2	K4	K6	K8	K10	K12	K14	K16
A: 1/2 Chest Circumference (CM)	38.5	41.5	44	47	49	52	54.5	57
B: Body Length (CM)	40	43.5	48	52.5	57	61	65	70
C: Sleeve Length (CM)	34	39	44	49	53	60	63	65

Adult size 3XS-7XL

Size	3XS	2XS	XS	S	M	L	XL	2XL	3XL	4XL	5XL	6XL	7XL
A: 1/2 Chest Circumference (CM)	50	52	54	56	58	60	62.5	65	68	71	76	82	88
B: Body Length (CM)	60	62	64	67	69.5	71.5	73.5	75.5	77.5	79.5	81.5	84	86
C: Sleeve Length (CM)	62	63	64	65	65.5	66.5	67	67.5	68.5	69	69.5	71.5	73.5

* These figures are indicative only, and some variation should be expected, due to fabric stretch and production tolerances.

MEASURING GUIDE



A. 1/2 Chest circumference:
Measured from armpit to armpit

B. Body length:
Measured on the reverse, from high shoulder point to end edge

C. Sleeve length:
Measured from the shoulder seam to the end of sleeve

* This size chart is suitable for both fleece jumper and sublimated jumper

A1A0009K-A

A1A0009M-A